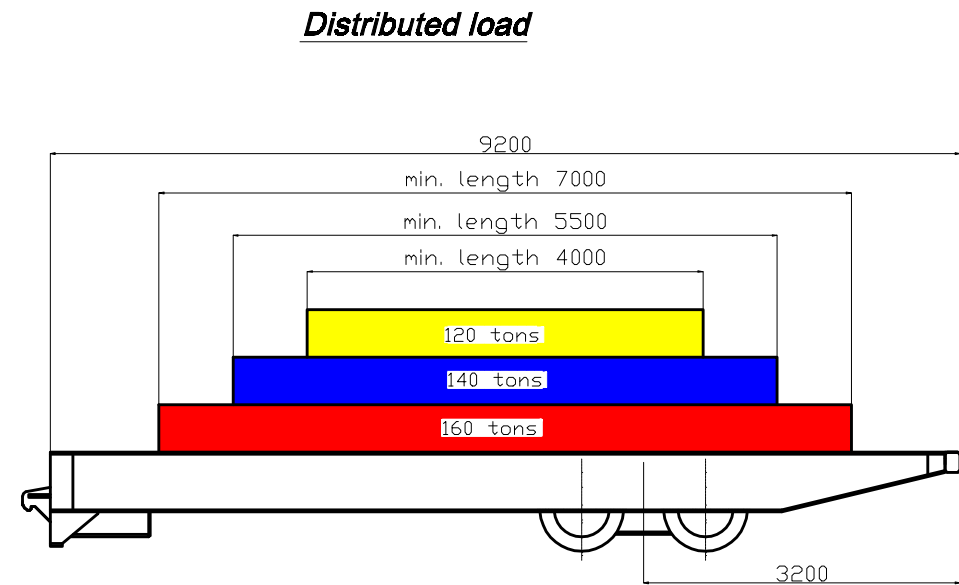
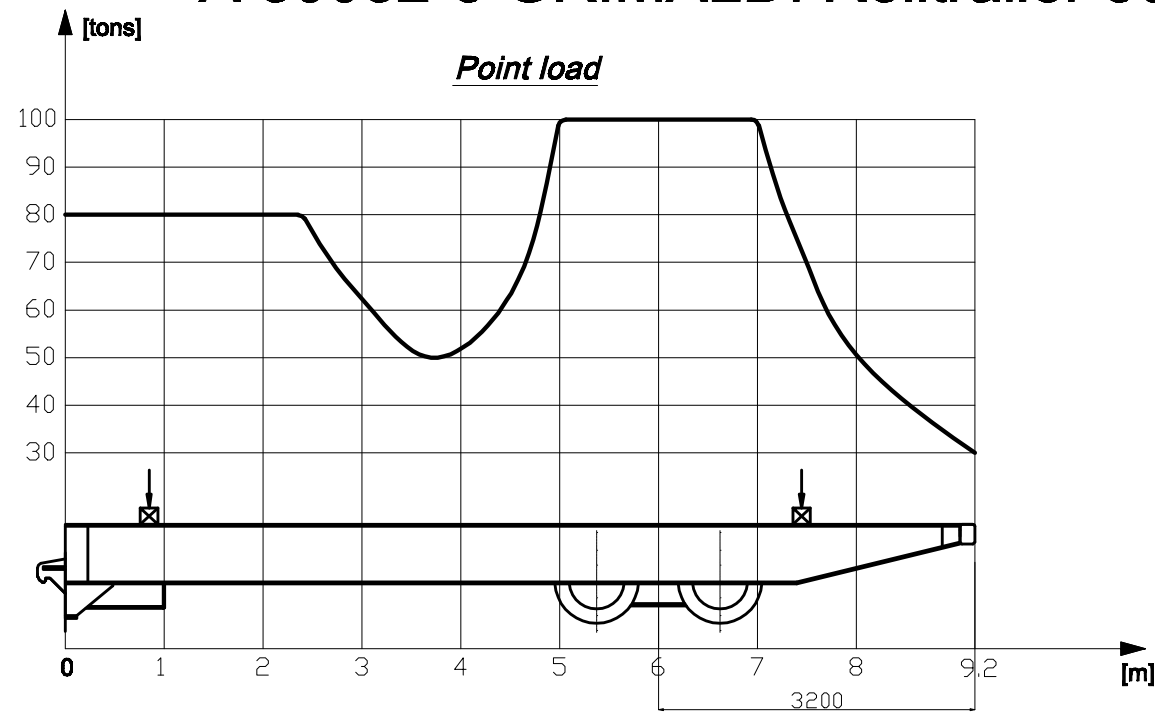
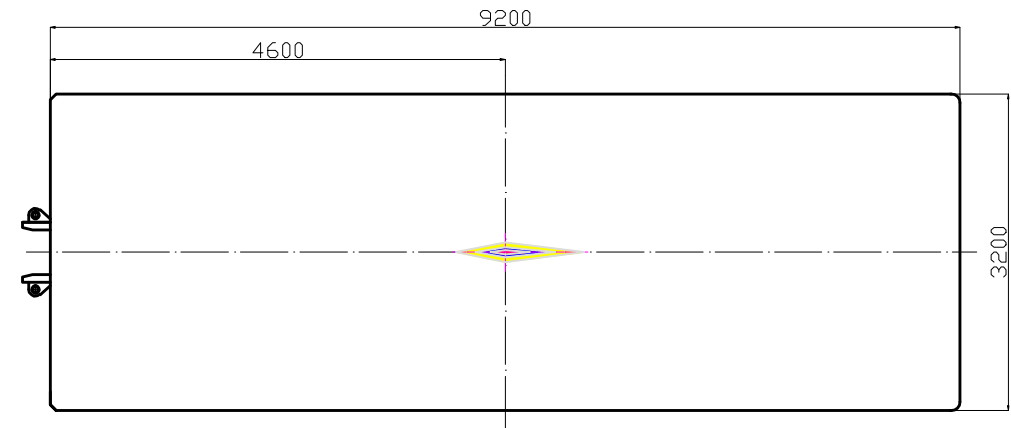
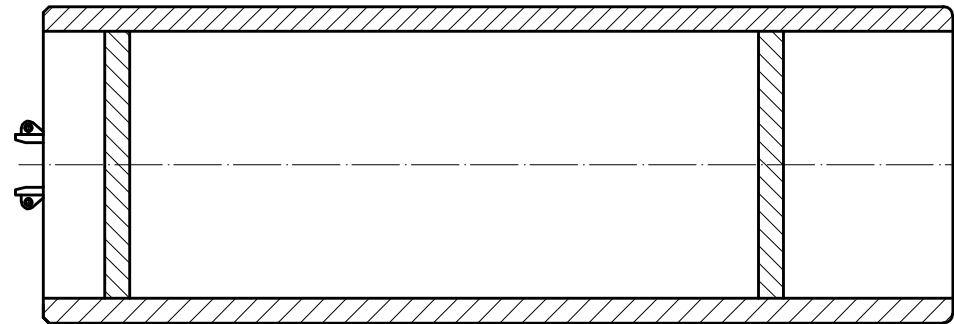


A 80082-3 GRIMALDI Rolltrailer 30 feet, 160 tons, 3.2m wide

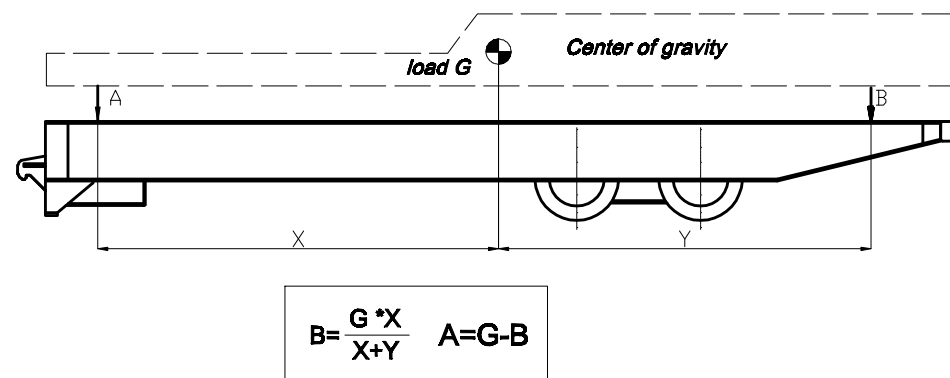


Point loads on the platform to be placed or transferred using transversal supports to the longitudinal beams

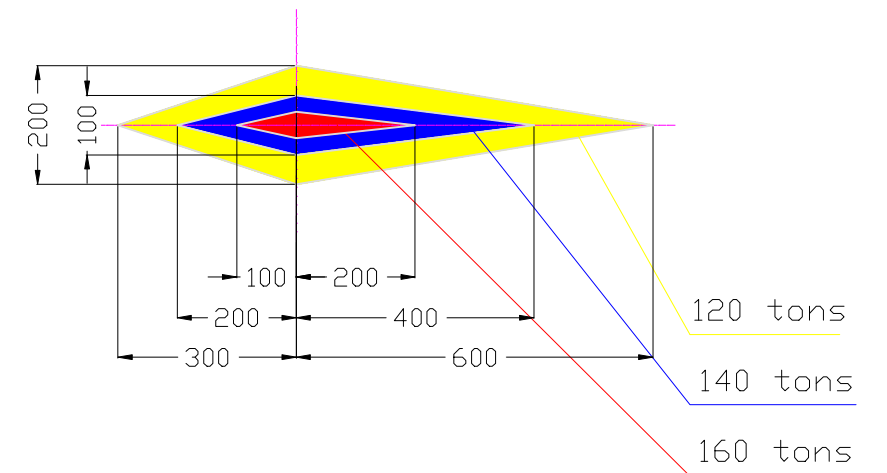


Loading instruction

- 1) Identify loads center of gravity
- 2) Calculate the loads, coming to the Rolltrailer platform acc to below scheme



Load center of gravity must be within the areas, corresponding to the load



- 3) Make sure, load center of gravity is in the detemined area
- 4) Loads A and B shall not exceed the limit line in above diagram